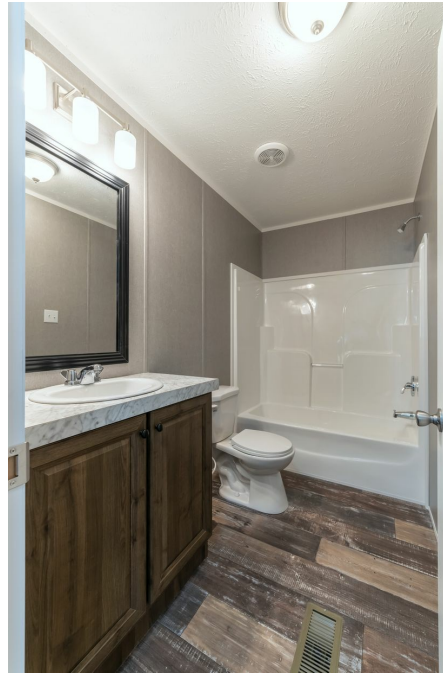




The MORRIS #3



The MORRIS #3 Model number: 34PRE28483BH19

3 beds • 2 baths • 1344 sq.ft. • 28' width • 48' depth

Our home building facilities invest in continuous product and process improvements. Plans, dimensions, features, materials, specifications and availability are subject to change without notice or obligation. Renderings and floor plans are representative likenesses of our homes and may differ from the actual homes. We invite you to tour a Home Center near you and inspect the highest value in quality housing available or call (502) 867-1770 to speak with a Home Consultant. Copyright 2017, CMH. All rights reserved.

<https://www.claytongeorgetown.com>

CLAYTON HOMES- GEORGETOWN

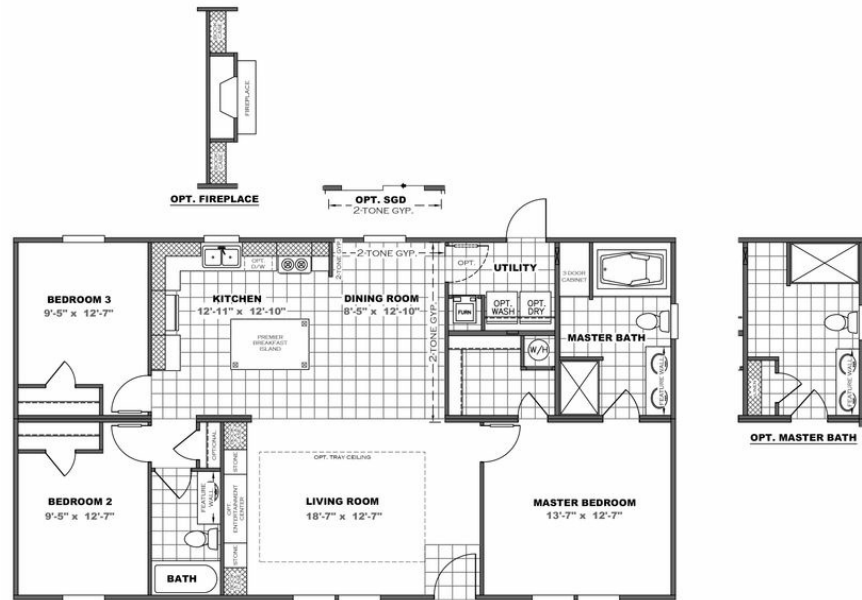
300 CONNECTOR RD
GEORGETOWN, KY 40324

Monday - Thursday: 9am - 7pm
Friday: 9am - 6pm
Saturday: 9am - 5pm
Sunday: Closed

(502) 867-1770



The MORRIS #3



The MORRIS #3 Model number: 34PRE28483BH19

3 beds • 2 baths • 1344 sq.ft. • 28' width • 48' depth

Our home building facilities invest in continuous product and process improvements. Plans, dimensions, features, materials, specifications and availability are subject to change without notice or obligation. Renderings and floor plans are representative likenesses of our homes and may differ from the actual homes. We invite you to tour a Home Center near you and inspect the highest value in quality housing available or call (502) 867-1770 to speak with a Home Consultant. Copyright 2017, CMH. All rights reserved.

<https://www.claytongeorgetown.com>

CLAYTON HOMES- GEORGETOWN

300 CONNECTOR RD
GEORGETOWN, KY 40324

Monday - Thursday: 9am - 7pm
Friday: 9am - 6pm
Saturday: 9am - 5pm
Sunday: Closed

(502) 867-1770